



# The Legacy Continues

**T**he promising journey of NSBM Green University over the past five years gives unwavering faith about its future.

The journey

ahead and its impacts would be far longer and wider than the journey so far, which would pave the way gradually in reaching towards the vision of being the best performing graduate school in Sri Lanka and being recognized internationally. The strategic leadership has driven the university for its present success and also has succeeded in taking giant steps in crafting the future as well. Phase 2 developments currently in progress will be a key driver of the university's future growth to further expand its impact on the world at large.

NSBM Green University, since its very inception, was planned for a total area of 50 acres of land. While Phase 1 was in operation with the substantial growth achieved in a shorter period of time, the university realized the need for further expansion with the available opportunities in the market in multiple domains in line with the strategic plan of the university.

In order to capitalize on the identified opportunities and also to

cater for the expansion requirements, another 15 acres of land adjoining the current project was acquired from the Urban Development Authority on 30-year lease and prepared plans for the Phase 2 of the Green University. Another key aspect of Phase 2 is the reliance on internally generated excess funds for each phase of development. Phase 2 is already in progress and development will be completed on an incremental basis of priority, initially been given to fund generating development activities considering the self-financing nature of the organization.

Considering the emerging requirements, the market developments and further expansion requirement of Phase 1 of the project, the master plan for Phase 2 consist of the following main components.

## **New Faculty Building Complex**

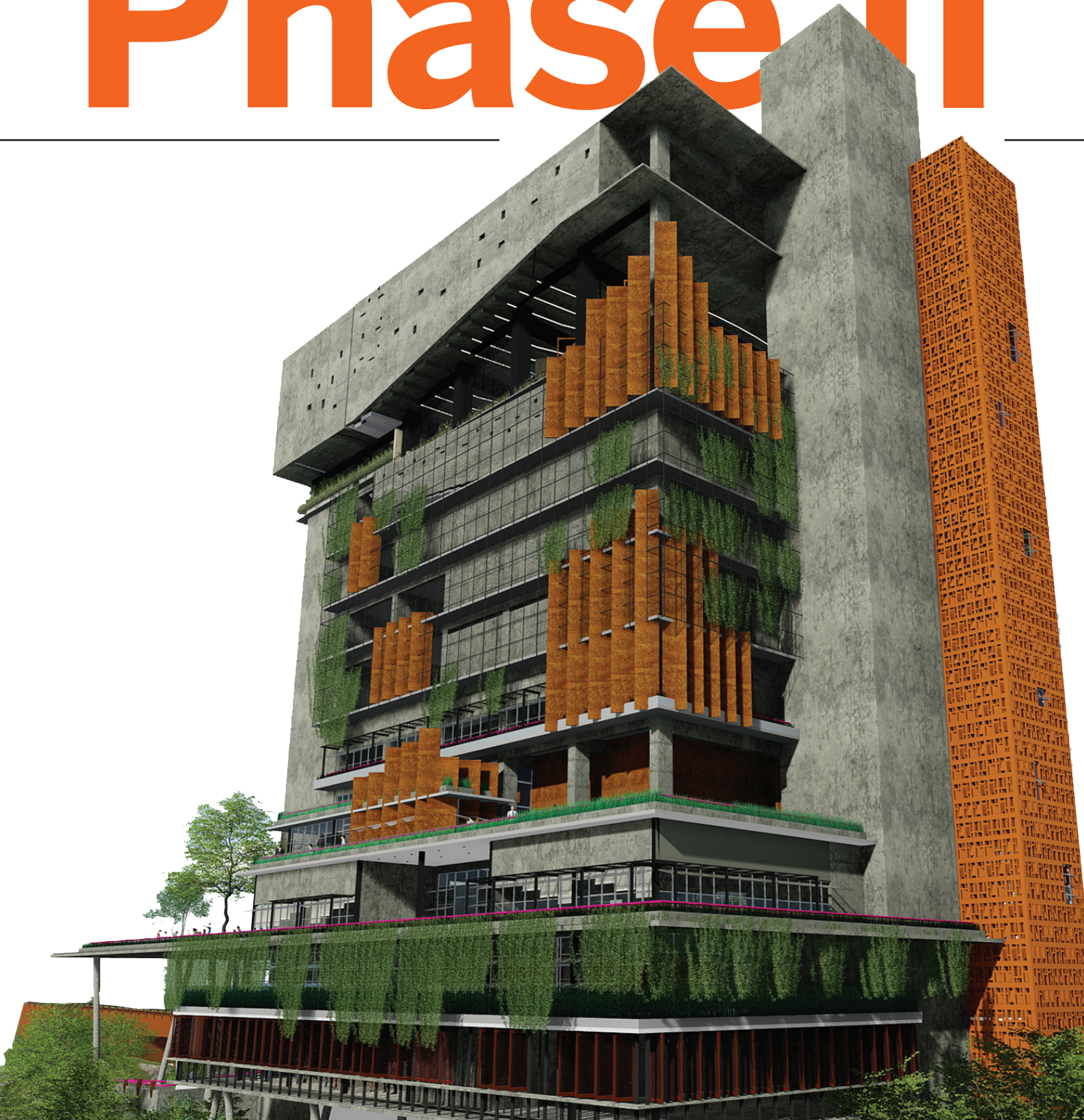
This includes a new faculty building for the proposed Faculty of Science, Faculty of Law and Faculty of Social Sciences. In addition to the main three faculties, the new faculty building complex will include student gathering areas, outdoor student gathering terrace area and also expanded education facilities in terms of one 500 seating capacity

lecture hall, one 250 seating capacity lecture hall and seven 100 seating capacity lecture halls, computer labs, tutorial rooms and other related amenities.

**In further improving the sustainable practices, a rainwater harvesting pond with a central island will be established with a total area of 2,500 square meters. With the intention of improving the overall well-being of the students, this would be further accompanied by an outdoor student gathering and recreational area, jogging path and a butterfly garden.**



# NSBM Phase II







## Female and Male Hostel Buildings

Each hostel complex consists of 169 rooms accommodating 505 students in total, a kitchen, a dining area with a seating capacity of 152 seats, laundry, administration facilities and warden's accommodation. The complex consists of two interconnected wings with nine and eight stories, respectively.

## Multi-functional Hall

With a total floor area of 13,500 square meters and consisting of five floors. Facilities further extend

to a total seating capacity of 2,000 seats, a lounge, a VIP lounge, two mini-conference rooms with a total capacity of fifty people, cafeteria, vehicle parking area of 100 slots in total, student gathering & activity area,, workshop area, post office, bank & ATMs and outdoor student gathering area.

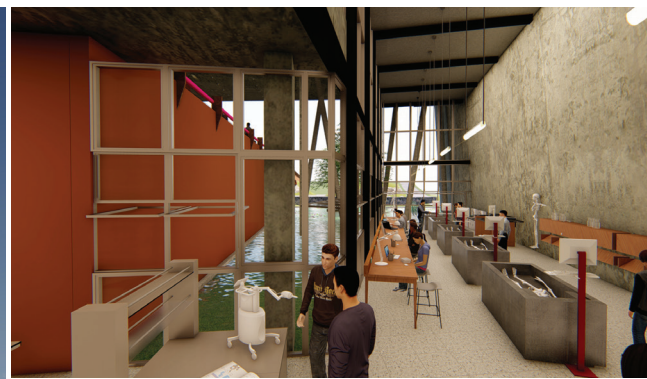
## Open Air Theatre

An open-air theatre with a total seating capacity of 500 seats and changing rooms.

## Natural Rainwater Harvesting Pond

In further improving the sustainable practices, a rainwater harvesting pond with a central island will be established with a total area of 2,500 square meters. With the intention of improving the overall well-being of the students, this would be further accompanied by an outdoor student gathering and recreational area, jogging path and a butterfly garden.





## A Playground

A playground with a total area of 14,000 square meters which includes a 400m running track, cricket/rugby grounds and a sports pavilion (inclusive of a VIP area); changing rooms, and cafeteria.

## Student Car Park

The student car park consists of 150 car parking slots, 10 bus parking slots, 100 motorbike parking slots which offer safe parking with CCTV Cameras for students.

## Day Care Centre

To bring about a welfare service to the staff, Phase 2 will also include a day care center which would facilitate 25 kids along with early childhood education service.

## Minor Staff Accommodation

Designed to facilitate the minor staff in terms of providing lodging facilities on a full time / short term basis.

The expansion happening in

terms of development in physical facilities is aiming at producing holistic graduates who are capable of meeting the requirements of the evolving world and sensible for the emerging needs of the society. Therefore, beyond Phase 2 development, the NSBM Green University focuses on expanding the scope of its own degree programmes, creating the culture required to develop a regional knowledge hub in terms of research and consultancy, broadening the impacts to the wider society and working towards higher global rankings. ■

**Compiled by Daupadee Gamage & Janith Iddawela**